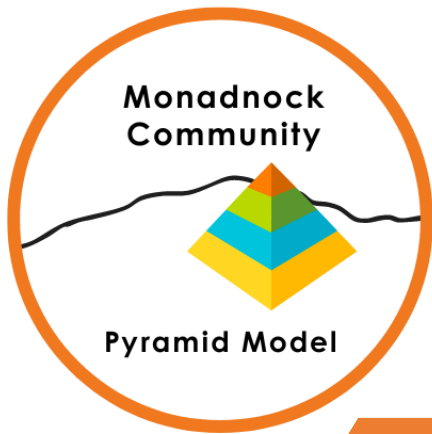


# 2023-2024 ANNUAL REPORT



**The Pyramid Model is an evidence-based system that supports teachers, caregivers and families to help young children develop healthy social and emotional skills that will serve them throughout their lives.**



## **Vision**

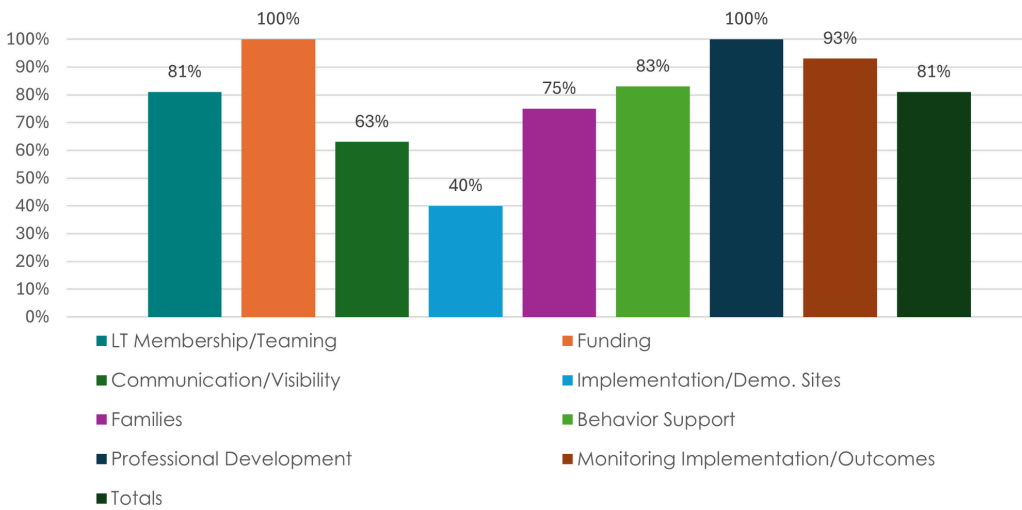
The Pyramid Model practices are embedded in the Monadnock community to intentionally support the social and emotional development of all young children and their families.

## **Mission**

The Monadnock Community Pyramid Model Leadership team supports the implementation of The Pyramid Model in our community through/by providing supplemental supports and braiding initiatives. The Leadership Team's work benefits children, families, and early childhood professionals in the Monadnock Region.

**Funded through the US Department of Education Congressionally Funded Community Project Program in partnership with Keene State College and Monadnock United Way.**

## 2023 Community Benchmarks of Quality



Each year, the Leadership Team completes the Community-Wide Benchmarks of Quality (BoQ). The results help to determine priorities for action planning. This report will highlight each section of the BoQ.

## Community Leadership Team Membership & Teaming

- Membership includes representatives from childcare, school district, Head Start, Program Coaches, Behavioral Health, Lead Agency, Family-Centered Early Supports and Services, family member.
- Meets Monthly for 2 hours
- Guided by Community Benchmarks of Quality
- Annual Data Summit – Data-based Decision Making



## Funding



We appreciate the financial support through the US Department of Education Congressionally Funded Community Project Program in partnership with Keene State College and Monadnock United Way. We also currently have project specific funding through Center for Population Health at Cheshire Medical Center.



We are currently seeking continued funding through a variety of sources.

Rise for baby and family is the fiscal agent for MCPM.





## Communication/Visibility

MCPM has partnered with the Cheshire Children's Museum for a wall display, museum expectations, solutions kits and social stories.

We have an active facebook page to celebrate achievements and promote resources and offerings.

The bulletin board displays for sites and our involvement with higher education also helps us communicate about Pyramid Model.



Follow us!



## Implementation/Demonstration Sites

Program coaches, provided through GSQ and augmented by MCPM, help programs build the infrastructure to implement Pyramid Model program-wide.

Eligible child care programs and family child care sites are able to apply for the Pyramid Model pathway on Granite Steps for Quality (GSQ). GSQ is NH's Quality Recognition and Improvement System (QRIS), a voluntary system that promotes and acknowledges continuous quality improvement. MCPM provides resources to augment the GSQ resources for sites in the Monadnock Region.



	<b>3</b>	<b>3</b>	<b>3</b>	<b>3*</b>	<b>3*</b>	Has Applied	Has Applied
--	----------	----------	----------	-----------	-----------	-------------	-------------

Other Partners:

*\*On-ramped at a lower step, but moved up*



Jonathan Daniels  
Preschool



## Families



5  
Bulletin Board  
Sets for  
12 Sites

"I had a family that had been struggling with their child and the morning routine. I was able to create a morning routine visual schedule for them to try at home with their child. They reported that they used it and it did help their child have a more successful transition from home to school in the morning." Staff Survey Response



Hosted at The Children's Learning Center  
at Cheshire Medical Center, Keene

### POSITIVE SOLUTIONS FOR FAMILIES

SUPPORTING FAMILIES TO PROMOTE CHILDREN'S SOCIAL AND EMOTIONAL DEVELOPMENT AND MANAGE CHALLENGING BEHAVIORS AT HOME.

Please register by March 25th

SESSION DATES/TIMES: Saturday April 6th and 20th from 8-noon  
Register here [\\*\\*\\*childcare is available!](#)

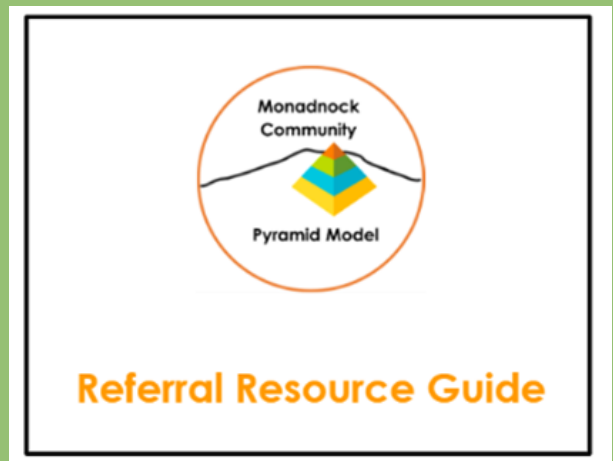
FUNDED THROUGH THE US DEPARTMENT OF EDUCATION CONGRESSIONALLY FUNDED COMMUNITY PROJECTS PROGRAM IN PARTNERSHIP WITH KEENE STATE COLLEGE AND MONADNOCK UNITED WAY.

12  
Attended

## Behavior Support



- A Referral Resource Guide for the Monadnock area was developed. Program staff can use the guide to contact the appropriate agencies depending upon where a family resides.
- We have focused some of our Professional Learning Community sessions around Tier 3 supports for children experiencing persistent, challenging behavior.
- Our coaches have provided additional training and consultation to sites to prevent and address challenging behavior.



"One of the biggest ways Pyramid Model has helped my classroom is by improving how we learn from, and address challenging behaviors. Currently, we have a lot of physical behaviors that we are trying to target (hitting, kicking, biting). I truly believe that using the Pyramid Model as a guide has helped us address the behaviors in a quicker, more positive way." Staff Survey Response



# Professional Development



6 Trained



8 Sessions  
56 Attended  
16 Programs

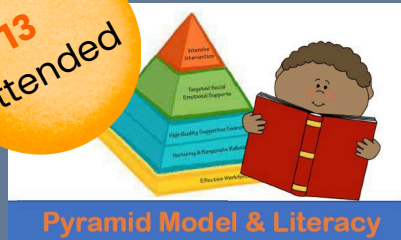


## Reflective Practice



9 Completed  
7.5 hour Series

13 Attended



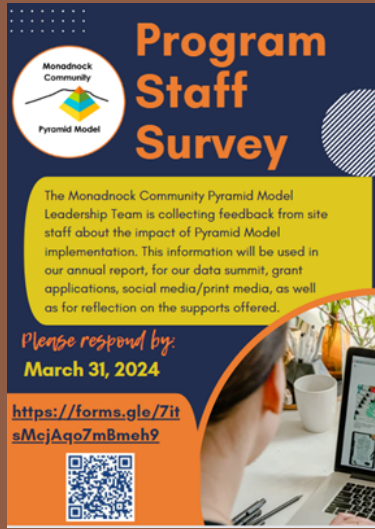
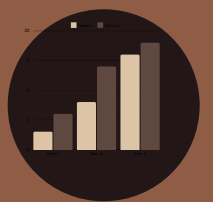
6 hours  
5 coaches

## Coach Professional Learning Community

3 Trained for Pilot  
Currently in 2 sites

"It is always great to see trainings on common challenges classrooms and teachers face, as well as provide new (or old) social emotional resources for classrooms and for family social/emotional engagement activities." ~Staff Survey Response

## Monitoring Implementation/Outcomes



As a result of the Pyramid Model practices we are implementing:

70%

We are able to address challenging behavior to a moderate to great extent.

65%

Children are demonstrating improved social emotional competence to a moderate or great extent.

75%

Relationships between our program and families have strengthened.

83 Responses  
11 Programs

5

Join us!

# DATA TREASURE HUNT

Agenda Clues:  
We'll take a deep dive into data related to each of the Benchmarks of Quality

MONDAY  
JUNE 3

at Pilgrim Pines Camp & Retreat Center  
220 West Shore Rd.,  
Swansey, NH  
9:00-12:00  
Lunch to follow

- PLEASE BRING:**
- ENTHUSIASM
  - IDEAS
  - APPETITE

(light breakfast, coffee, water and a delicious lunch provided)

Please Respond by  
5/24/24

Email Annie or Tammy  
Please let us know of any accommodations needed.

Monadnock Community

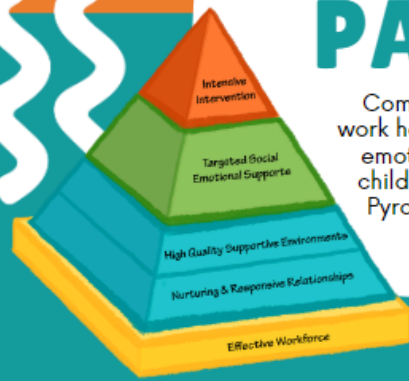


Pyramid Model

3  
JUNE

# Community PARTNERS

Come learn about the AMAZING work happening to support the social emotional development of young children in our community through Pyramid Model implementation.



Monday June 3rd  
2:30-3:30 PM  
HCS  
312 Marlborough Street  
Keene, NH

RSVP by 5/24/24  
<https://forms.gle/3bjmH192xnF86YbE9>



Monadnock Community



Pyramid Model

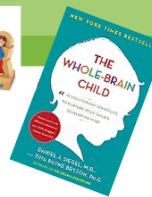
Unpacking  
The Pyramid Model  
A Practical Guide for Preschool Teachers



IN MY HEART



Lending Library



Monadnock Community



Pyramid Model



Contact Information:

Annie Dintino-Cucchi, Team Lead  
adintino22@gmail.com

Tammy Vittum, Process Coach  
tammyvittum@gmail.com

Follow  
-US-

